

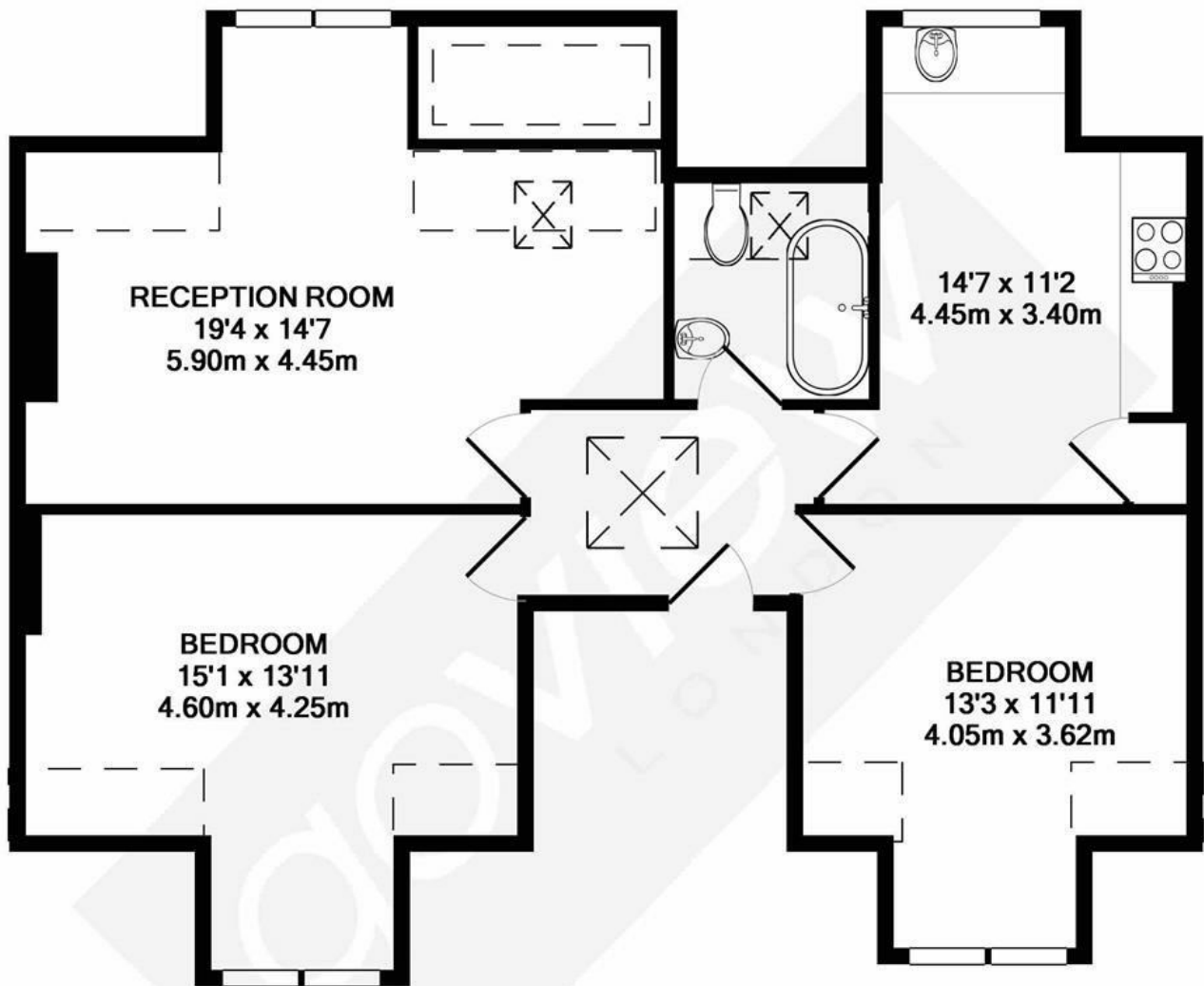


## Creffield Road, W5

LONG LET. This large two bedroom flat boasts contemporary interior décor and is located close to public transport and local amenities.

- TWO BEDROOM FLAT
- GREAT LOCATION
- SEPARATE KITCHEN
- CLOSE TO STATION
- COMMUNAL GARDEN
- LARGE RECEPTION ROOM

£2,200 PCM



TOTAL APPROX. FLOOR AREA 775 SQ.FT. (72.0 SQ.M.)

Whilst every attempt has been made to ensure the accuracy of the floor plan contained here, measurements of doors, windows, rooms and any other items are approximate and no responsibility is taken for any error, omission, or mis-statement. This plan is for illustrative purposes only and should be used as such by any prospective purchaser. The services, systems and appliances shown have not been tested and no guarantee as to their operability or efficiency can be given

Made with Metropix ©2019



Energy Efficiency Rating		
	Current	Potential
Very energy efficient - lower running costs		
(92 plus) <b>A</b>		
(81-91) <b>B</b>		
(69-80) <b>C</b>		
(55-68) <b>D</b>	62	66
(39-54) <b>E</b>		
(21-38) <b>F</b>		
(1-20) <b>G</b>		
Not energy efficient - higher running costs		
<b>England &amp; Wales</b>	EU Directive 2002/91/EC	